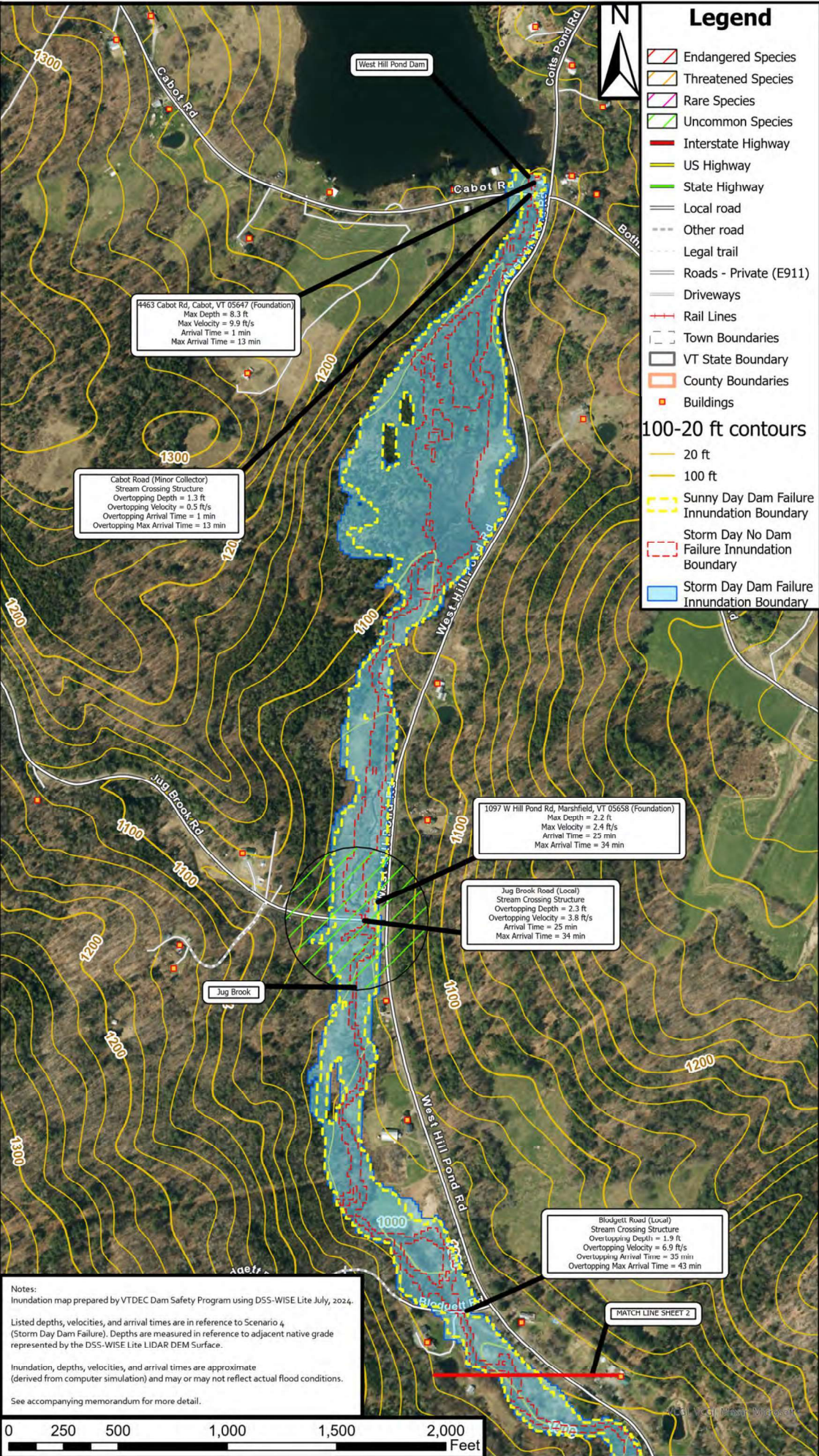


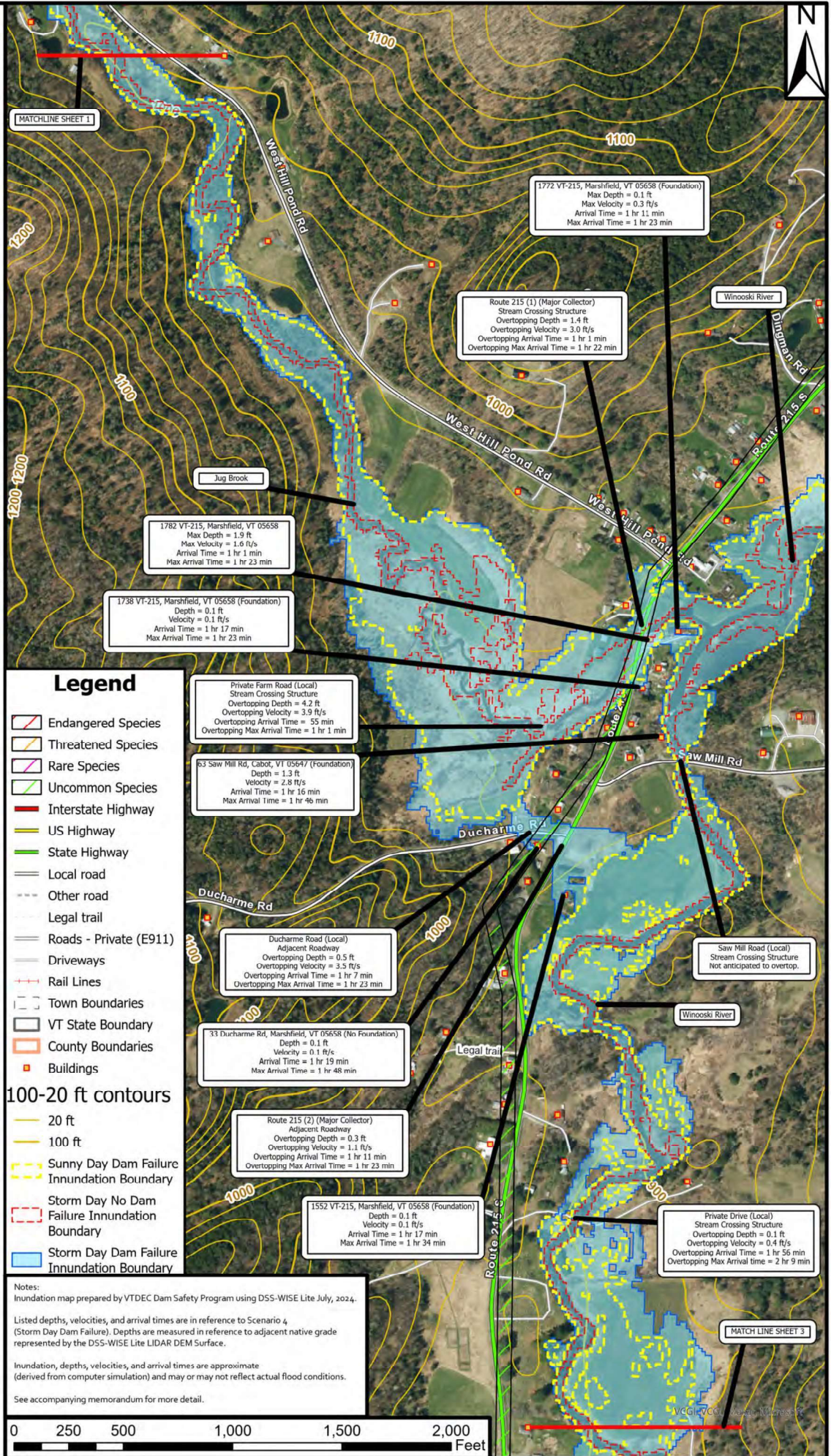
West Hill Pond Dam (39.01) - Cabot, VT - Flood Inundation Map

Vermont Agency of Natural Resources - Department of Environmental Conservation - Dam Safety Program



West Hill Pond Dam (39.01) - Cabot, VT - Flood Inundation Map

Vermont Agency of Natural Resources - Department of Environmental Conservation - Dam Safety Program



Legend

- Endangered Species
- Threatened Species
- Rare Species
- Uncommon Species
- Interstate Highway
- US Highway
- State Highway
- Local road
- Other road
- Legal trail
- Roads - Private (E911)
- Driveways
- Rail Lines
- Town Boundaries
- VT State Boundary
- County Boundaries
- Buildings
- 100-20 ft contours
- 20 ft
- 100 ft
- Sunny Day Dam Failure Inundation Boundary
- Storm Day No Dam Failure Inundation Boundary
- Storm Day Dam Failure Inundation Boundary

Private Farm Road (Local)
Stream Crossing Structure
Overtopping Depth = 4.2 ft
Overtopping Velocity = 3.9 ft/s
Overtopping Arrival Time = 55 min
Overtopping Max Arrival Time = 1 hr 1 min

63 Saw Mill Rd, Cabot, VT 05647 (Foundation)
Depth = 1.3 ft
Velocity = 2.8 ft/s
Arrival Time = 1 hr 16 min
Max Arrival Time = 1 hr 46 min

Ducharme Road (Local)
Adjacent Roadway
Overtopping Depth = 0.5 ft
Overtopping Velocity = 3.5 ft/s
Overtopping Arrival Time = 1 hr 7 min
Overtopping Max Arrival Time = 1 hr 23 min

33 Ducharme Rd, Marshfield, VT 05658 (No Foundation)
Depth = 0.1 ft
Velocity = 0.1 ft/s
Arrival Time = 1 hr 19 min
Max Arrival Time = 1 hr 48 min

Route 215 (2) (Major Collector)
Adjacent Roadway
Overtopping Depth = 0.3 ft
Overtopping Velocity = 1.1 ft/s
Overtopping Arrival Time = 1 hr 11 min
Overtopping Max Arrival Time = 1 hr 23 min

1552 VT-215, Marshfield, VT 05658 (Foundation)
Depth = 0.1 ft
Velocity = 0.1 ft/s
Arrival Time = 1 hr 17 min
Max Arrival Time = 1 hr 34 min

Private Drive (Local)
Stream Crossing Structure
Overtopping Depth = 0.1 ft
Overtopping Velocity = 0.4 ft/s
Overtopping Arrival Time = 1 hr 56 min
Overtopping Max Arrival Time = 2 hr 9 min

Route 215 (1) (Major Collector)
Stream Crossing Structure
Overtopping Depth = 1.4 ft
Overtopping Velocity = 3.0 ft/s
Overtopping Arrival Time = 1 hr 1 min
Overtopping Max Arrival Time = 1 hr 22 min

1772 VT-215, Marshfield, VT 05658 (Foundation)
Max Depth = 0.1 ft
Max Velocity = 0.3 ft/s
Arrival Time = 1 hr 11 min
Max Arrival Time = 1 hr 23 min

1782 VT-215, Marshfield, VT 05658
Max Depth = 1.9 ft
Max Velocity = 1.6 ft/s
Arrival Time = 1 hr 1 min
Max Arrival Time = 1 hr 23 min

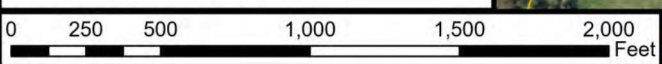
1738 VT-215, Marshfield, VT 05658 (Foundation)
Depth = 0.1 ft
Velocity = 0.1 ft/s
Arrival Time = 1 hr 17 min
Max Arrival Time = 1 hr 23 min

Notes:
Inundation map prepared by VTDEC Dam Safety Program using DSS-WISE Lite July, 2024.

Listed depths, velocities, and arrival times are in reference to Scenario 4 (Storm Day Dam Failure). Depths are measured in reference to adjacent native grade represented by the DSS-WISE Lite LIDAR DEM Surface.

Inundation, depths, velocities, and arrival times are approximate (derived from computer simulation) and may or may not reflect actual flood conditions.

See accompanying memorandum for more detail.



VCGLIVEG... Microsoft

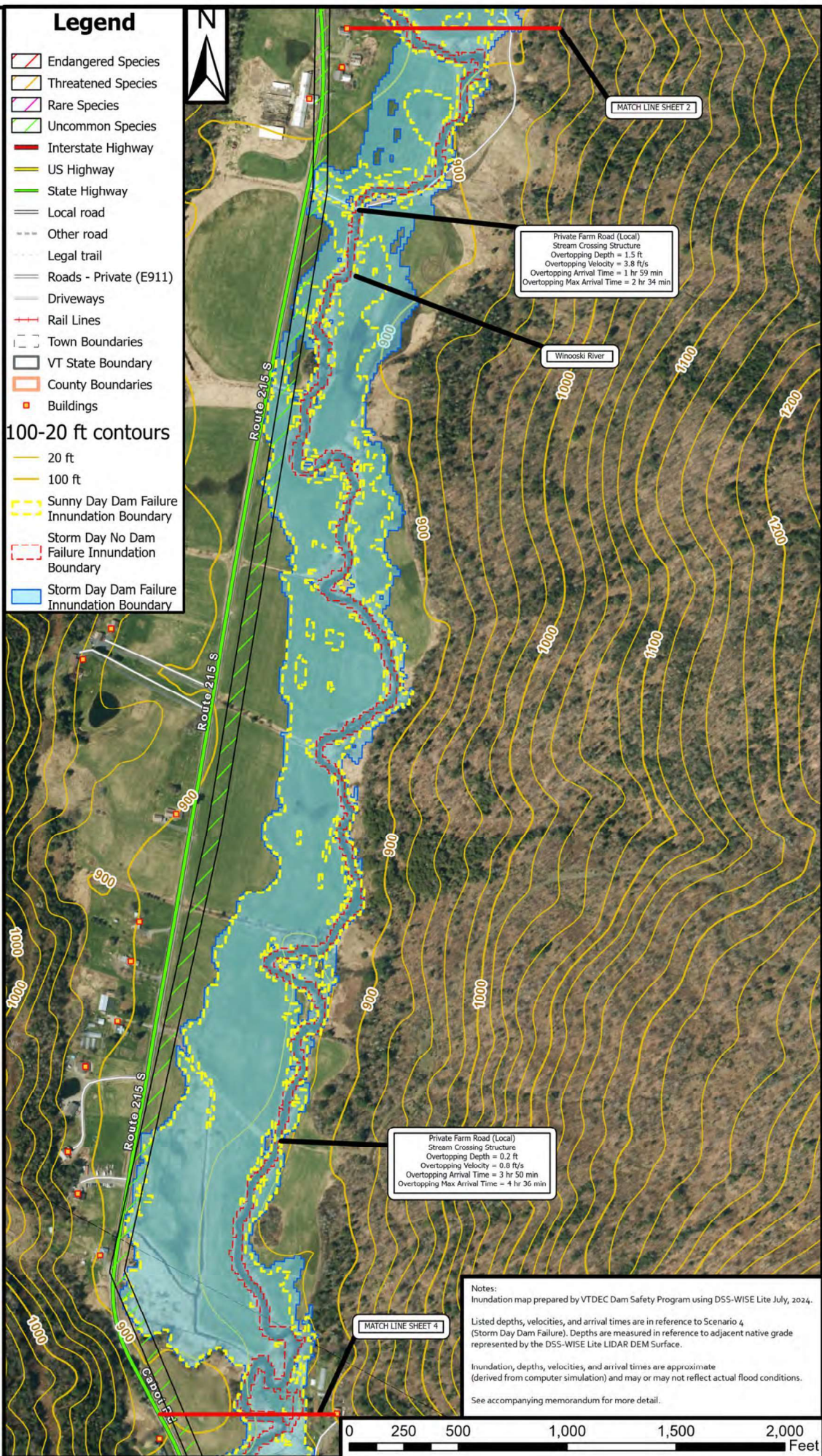
West Hill Pond Dam (39.01) - Cabot, VT - Flood Inundation Map

Vermont Agency of Natural Resources - Department of Environmental Conservation - Dam Safety Program



Legend

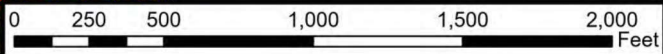
- Endangered Species
- Threatened Species
- Rare Species
- Uncommon Species
- Interstate Highway
- US Highway
- State Highway
- Local road
- Other road
- Legal trail
- Roads - Private (E911)
- Driveways
- Rail Lines
- Town Boundaries
- VT State Boundary
- County Boundaries
- Buildings
- 100-20 ft contours
- 20 ft
- 100 ft
- Sunny Day Dam Failure Inundation Boundary
- Storm Day No Dam Failure Inundation Boundary
- Storm Day Dam Failure Inundation Boundary



Private Farm Road (Local)
Stream Crossing Structure
Overtopping Depth = 1.5 ft
Overtopping Velocity = 3.8 ft/s
Overtopping Arrival Time = 1 hr 59 min
Overtopping Max Arrival Time = 2 hr 34 min

Private Farm Road (Local)
Stream Crossing Structure
Overtopping Depth = 0.2 ft
Overtopping Velocity = 0.8 ft/s
Overtopping Arrival Time = 3 hr 50 min
Overtopping Max Arrival Time = 4 hr 36 min

Notes:
Inundation map prepared by VTDEC Dam Safety Program using DSS-WISE Lite July, 2024.
Listed depths, velocities, and arrival times are in reference to Scenario 4 (Storm Day Dam Failure). Depths are measured in reference to adjacent native grade represented by the DSS-WISE Lite LIDAR DEM Surface.
Inundation, depths, velocities, and arrival times are approximate (derived from computer simulation) and may or may not reflect actual flood conditions.
See accompanying memorandum for more detail.



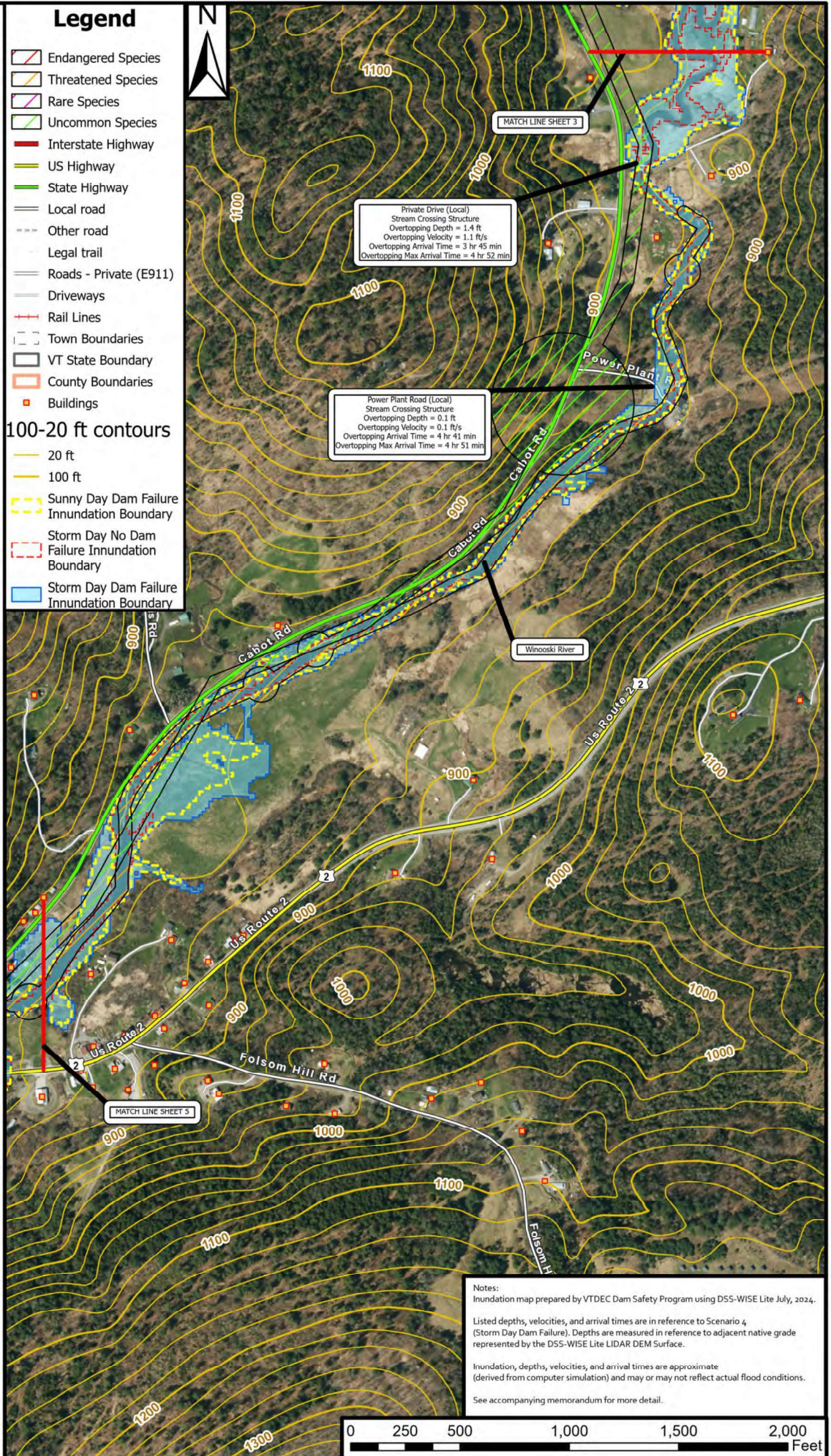
West Hill Pond Dam (39.01) - Cabot, VT - Flood Inundation Map

Vermont Agency of Natural Resources - Department of Environmental Conservation - Dam Safety Program

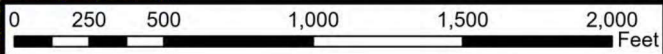


Legend

- Endangered Species
- Threatened Species
- Rare Species
- Uncommon Species
- Interstate Highway
- US Highway
- State Highway
- Local road
- Other road
- Legal trail
- Roads - Private (E911)
- Driveways
- Rail Lines
- Town Boundaries
- VT State Boundary
- County Boundaries
- Buildings
- 100-20 ft contours
- 20 ft
- 100 ft
- Sunny Day Dam Failure Inundation Boundary
- Storm Day No Dam Failure Inundation Boundary
- Storm Day Dam Failure Inundation Boundary



Notes:
 Inundation map prepared by VTDEC Dam Safety Program using DSS-WISE Lite July, 2024.
 Listed depths, velocities, and arrival times are in reference to Scenario 4 (Storm Day Dam Failure). Depths are measured in reference to adjacent native grade represented by the DSS-WISE Lite LIDAR DEM Surface.
 Inundation, depths, velocities, and arrival times are approximate (derived from computer simulation) and may or may not reflect actual flood conditions.
 See accompanying memorandum for more detail.



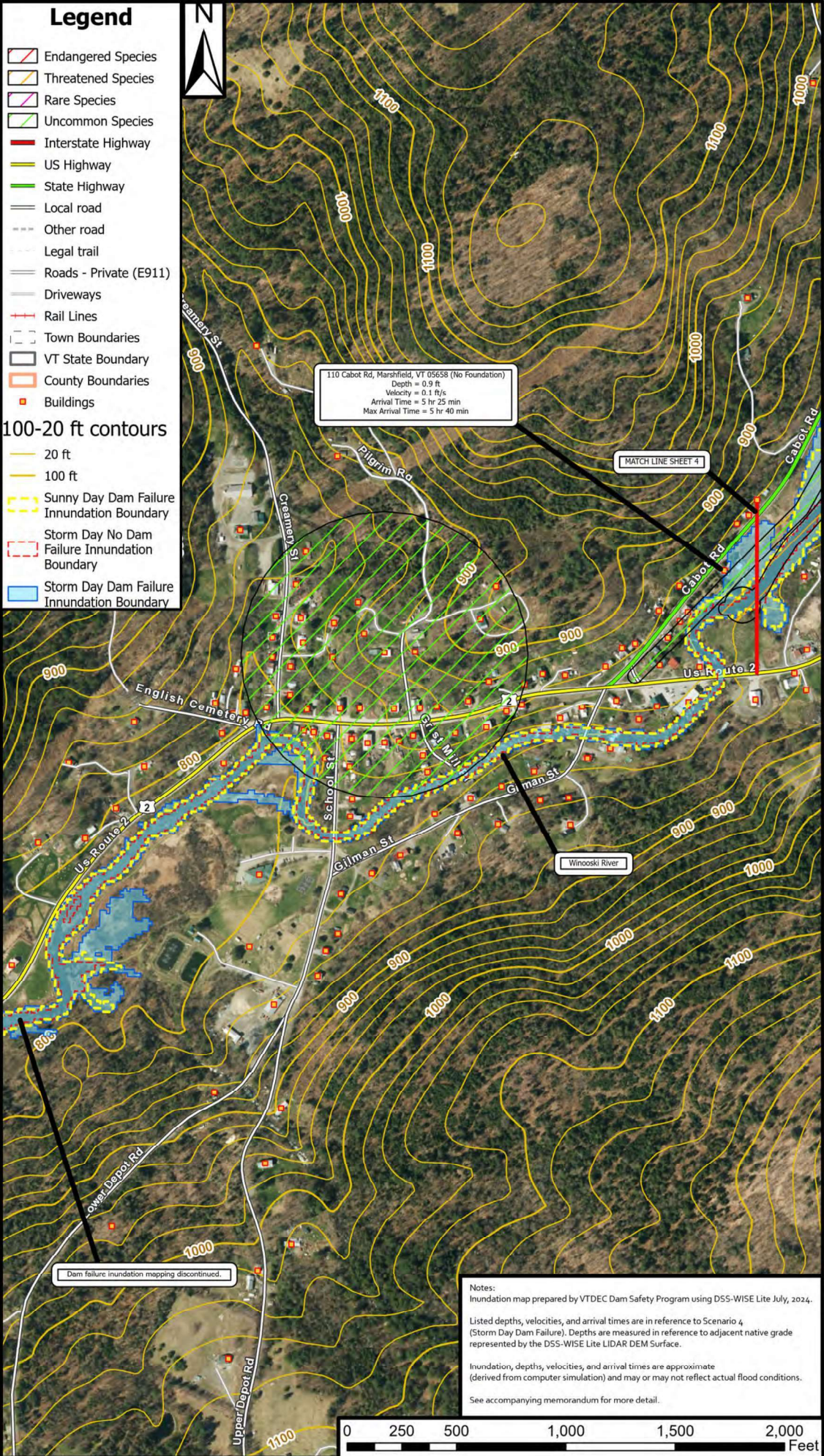
West Hill Pond Dam (39.01) - Cabot, VT - Flood Inundation Map

Vermont Agency of Natural Resources - Department of Environmental Conservation - Dam Safety Program



Legend

- Endangered Species
 - Threatened Species
 - Rare Species
 - Uncommon Species
 - Interstate Highway
 - US Highway
 - State Highway
 - Local road
 - Other road
 - Legal trail
 - Roads - Private (E911)
 - Driveways
 - Rail Lines
 - Town Boundaries
 - VT State Boundary
 - County Boundaries
 - Buildings
- 100-20 ft contours
- 20 ft
 - 100 ft
 - Sunny Day Dam Failure Inundation Boundary
 - Storm Day No Dam Failure Inundation Boundary
 - Storm Day Dam Failure Inundation Boundary



Dam failure inundation mapping discontinued.

Notes:
 Inundation map prepared by VTDEC Dam Safety Program using DSS-WISE Lite July, 2024.
 Listed depths, velocities, and arrival times are in reference to Scenario 4 (Storm Day Dam Failure). Depths are measured in reference to adjacent native grade represented by the DSS-WISE Lite LIDAR DEM Surface.
 Inundation, depths, velocities, and arrival times are approximate (derived from computer simulation) and may or may not reflect actual flood conditions.
 See accompanying memorandum for more detail.

