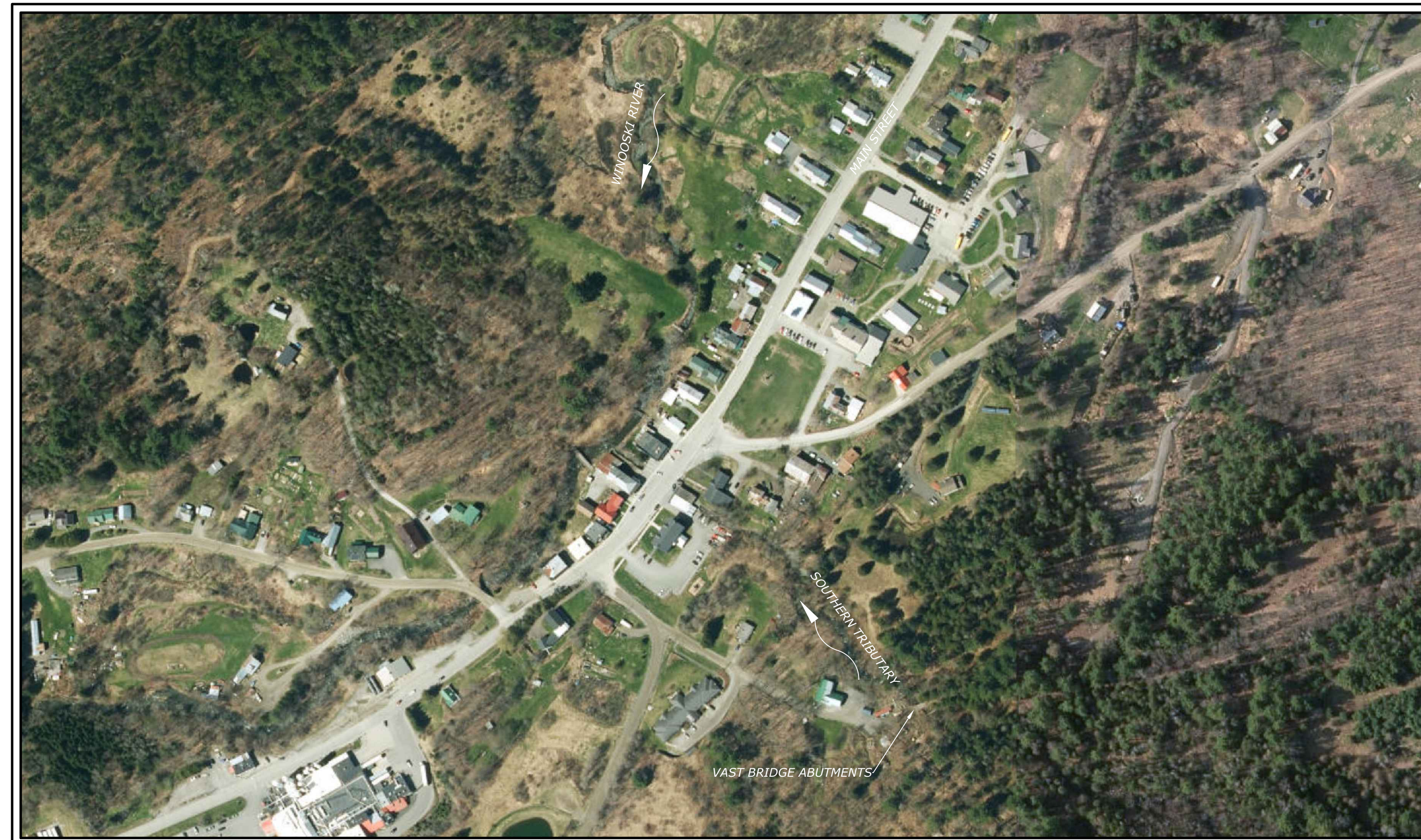


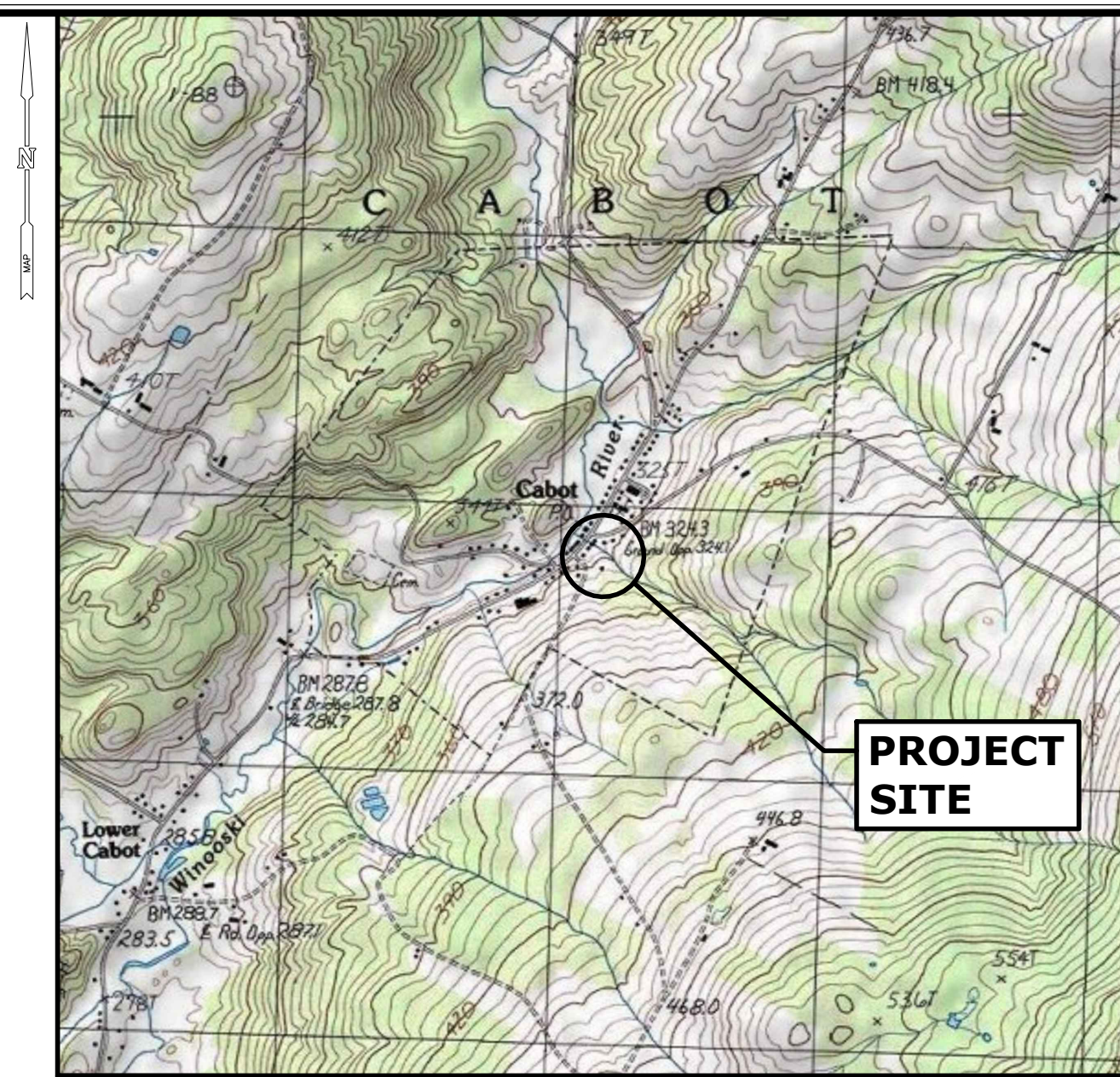
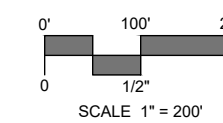
SOUTHERN TRIBUTARY FLOOD MITIGATION CABOT FLOOD STUDY

MAIN STREET
CABOT, VERMONT

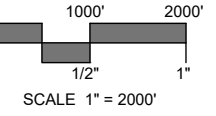
CONCEPT DESIGN
FEBRUARY 25, 2025



PROJECT SITE VICINITY MAP:



LOCATION MAP:



PREPARED FOR:

TOWN OF CABOT
3084 MAIN STREET
CABOT, VERMONT 05647

LIST OF DRAWINGS

NO.	NAME	TITLE
01	-	TITLE SHEET
02	EX-1	EXISTING CONDITIONS - MAIN STREET STRUCTURE
03	PR-1	PROPOSED CONDITIONS - MAIN STREET STRUCTURE
04	XS-1	TYPICAL SECTIONS
05	EX-2	EXISTING CONDITIONS - VAST BRIDGE ABUTMENTS
06	PR-2	PROPOSED CONDITIONS - VAST BRIDGE ABUTMENTS

PREPARED BY:



1 SOUTH MAIN STREET
WATERBURY, VT 05676
802.882.8335
SLRCONSULTING.COM



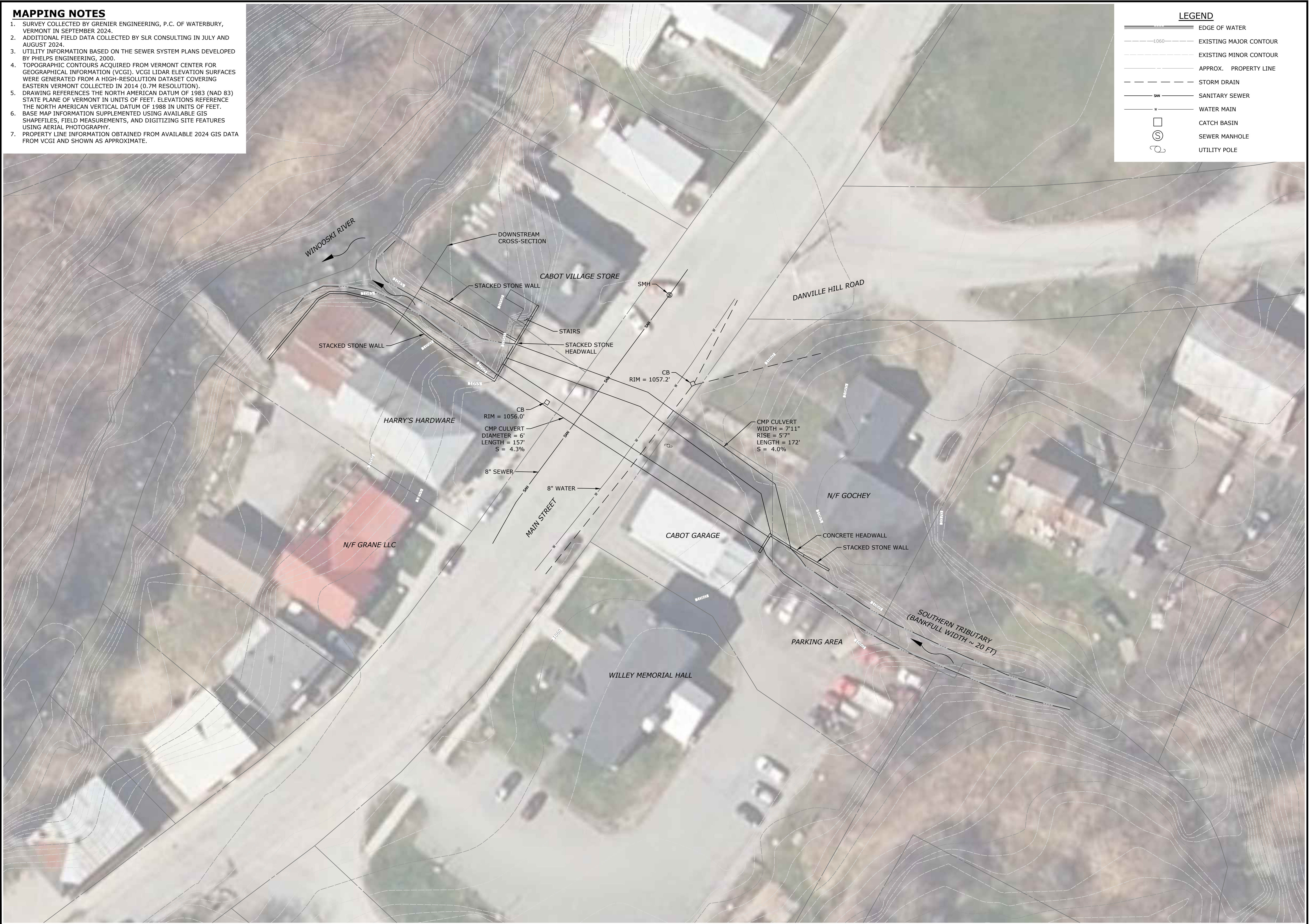
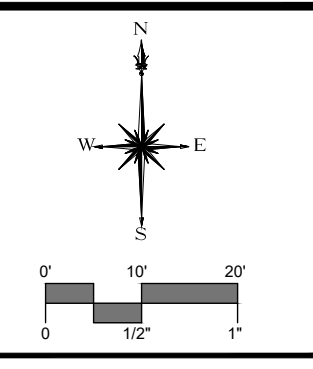
Know what's below.
Call before you dig.
www.cbyd.com

MAPPING NOTES

1. SURVEY COLLECTED BY GRENIER ENGINEERING, P.C. OF WATERBURY, VERMONT IN SEPTEMBER 2024.
2. ADDITIONAL FIELD DATA COLLECTED BY SLR CONSULTING IN JULY AND AUGUST 2024.
3. UTILITY INFORMATION BASED ON THE SEWER SYSTEM PLANS DEVELOPED BY PHELPS ENGINEERING, 2000.
4. TOPOGRAPHIC CONTOURS ACQUIRED FROM VERMONT CENTER FOR GEOGRAPHICAL INFORMATION (VCGI). VCGI LIDAR ELEVATION SURFACES WERE GENERATED FROM A HIGH-RESOLUTION DATASET COVERING EASTERN VERMONT COLLECTED IN 2014 (0.7M RESOLUTION).
5. DRAWING REFERENCES THE NORTH AMERICAN DATUM OF 1983 (NAD 83) STATE PLANE OF VERMONT IN UNITS OF FEET. ELEVATIONS REFERENCE THE NORTH AMERICAN VERTICAL DATUM OF 1988 IN UNITS OF FEET.
6. BASE MAP INFORMATION SUPPLEMENTED USING AVAILABLE GIS SHAPEFILES, FIELD MEASUREMENTS, AND DIGITIZING SITE FEATURES USING AERIAL PHOTOGRAPHY.
7. PROPERTY LINE INFORMATION OBTAINED FROM AVAILABLE 2024 GIS DATA FROM VCGI AND SHOWN AS APPROXIMATE.

LEGEND

- EDGE OF WATER
- EXISTING MAJOR CONTOUR
- EXISTING MINOR CONTOUR
- APPROX. PROPERTY LINE
- STORM DRAIN
- SANITARY SEWER
- WATER MAIN
- CATCH BASIN
- SEWER MANHOLE
- UTILITY POLE



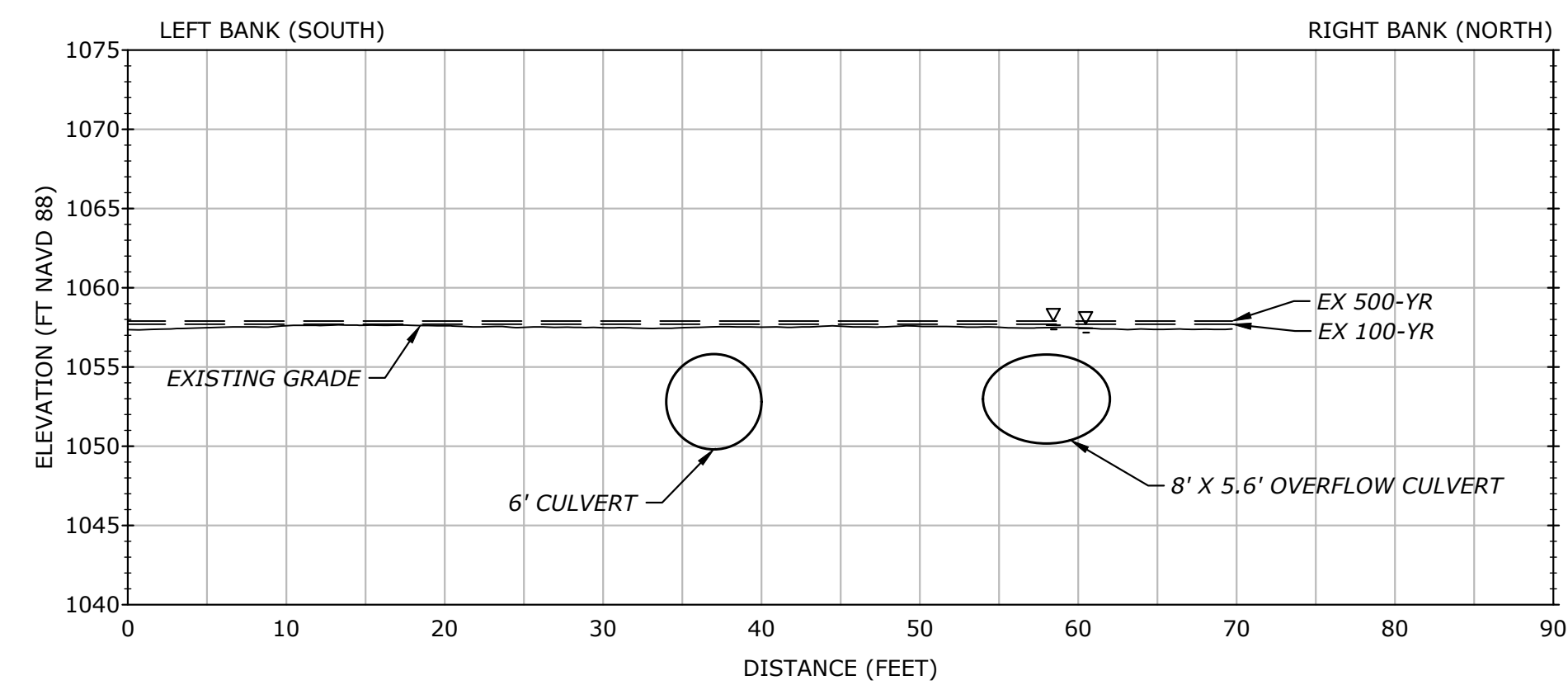
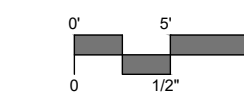
DESCRIPTION	DATE	BY

EXISTING CONDITIONS - MAIN STREET CROSSING
 SOUTHERN TRIBUTARY FLOOD MITIGATION
 CABOT FLOOD STUDY
 MAIN STREET
 CABOT, VERMONT

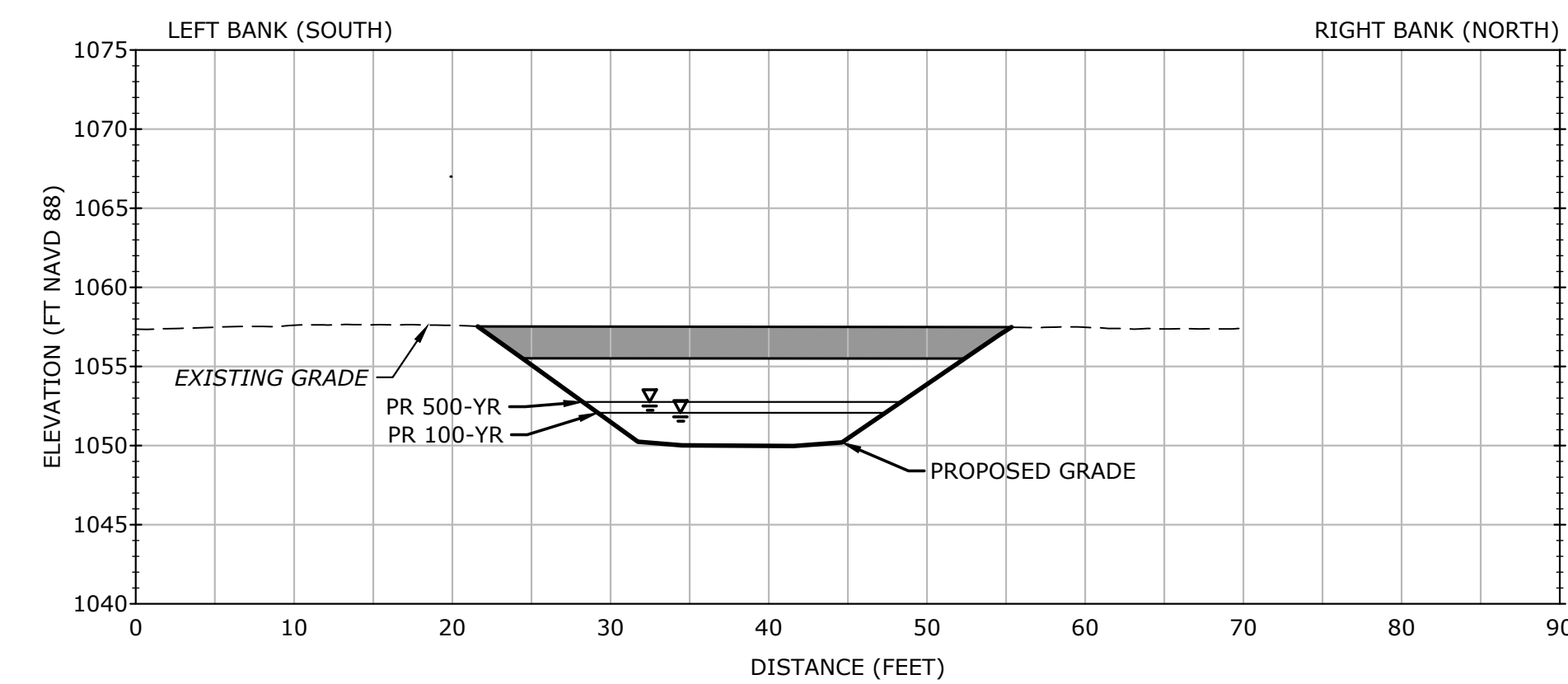
CONCEPT DESIGN

DJO	DJO	RKS
DESIGNED	DRAWN	CHECKED
1" = 20'		
FEBRUARY 25, 2025		
DATE		
15729.00002		
PROJECT NO.		
2 OF 6		
SHEET NO.		
EX-1		
SHEET NAME		

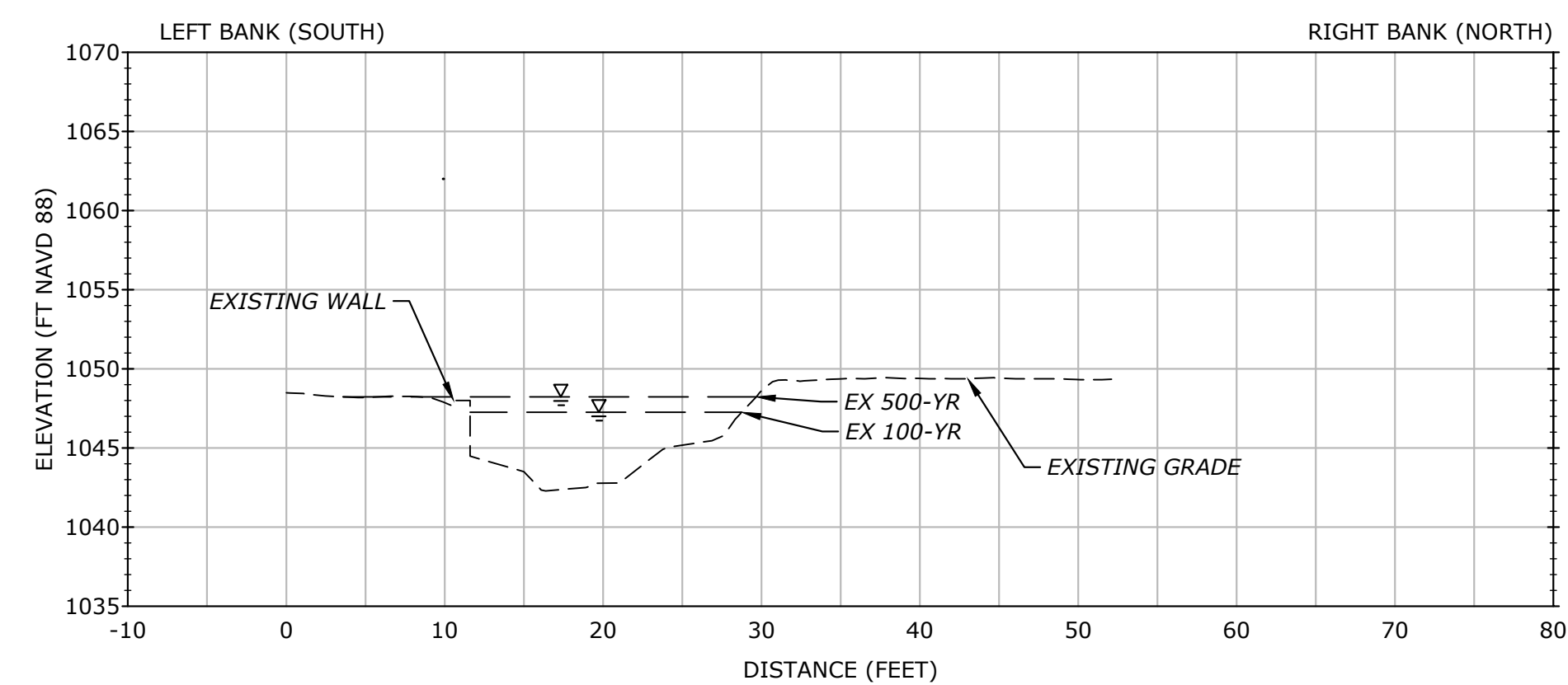
NOTES: 1. ALL ELEVATIONS ARE IN FEET NAVD 88 UNLESS OTHERWISE NOTED.
 2. ALL DISTANCES ARE IN FEET UNLESS OTHERWISE NOTED.
 3. ALL DIMENSIONS ARE TO CENTERLINE UNLESS OTHERWISE NOTED.
 4. ALL DIMENSIONS ARE TO FACE UNLESS OTHERWISE NOTED.
 5. ALL DIMENSIONS ARE TO CENTERLINE UNLESS OTHERWISE NOTED.
 6. ALL DIMENSIONS ARE TO FACE UNLESS OTHERWISE NOTED.
 7. ALL DIMENSIONS ARE TO CENTERLINE UNLESS OTHERWISE NOTED.
 8. ALL DIMENSIONS ARE TO FACE UNLESS OTHERWISE NOTED.
 9. ALL DIMENSIONS ARE TO CENTERLINE UNLESS OTHERWISE NOTED.
 10. ALL DIMENSIONS ARE TO FACE UNLESS OTHERWISE NOTED.



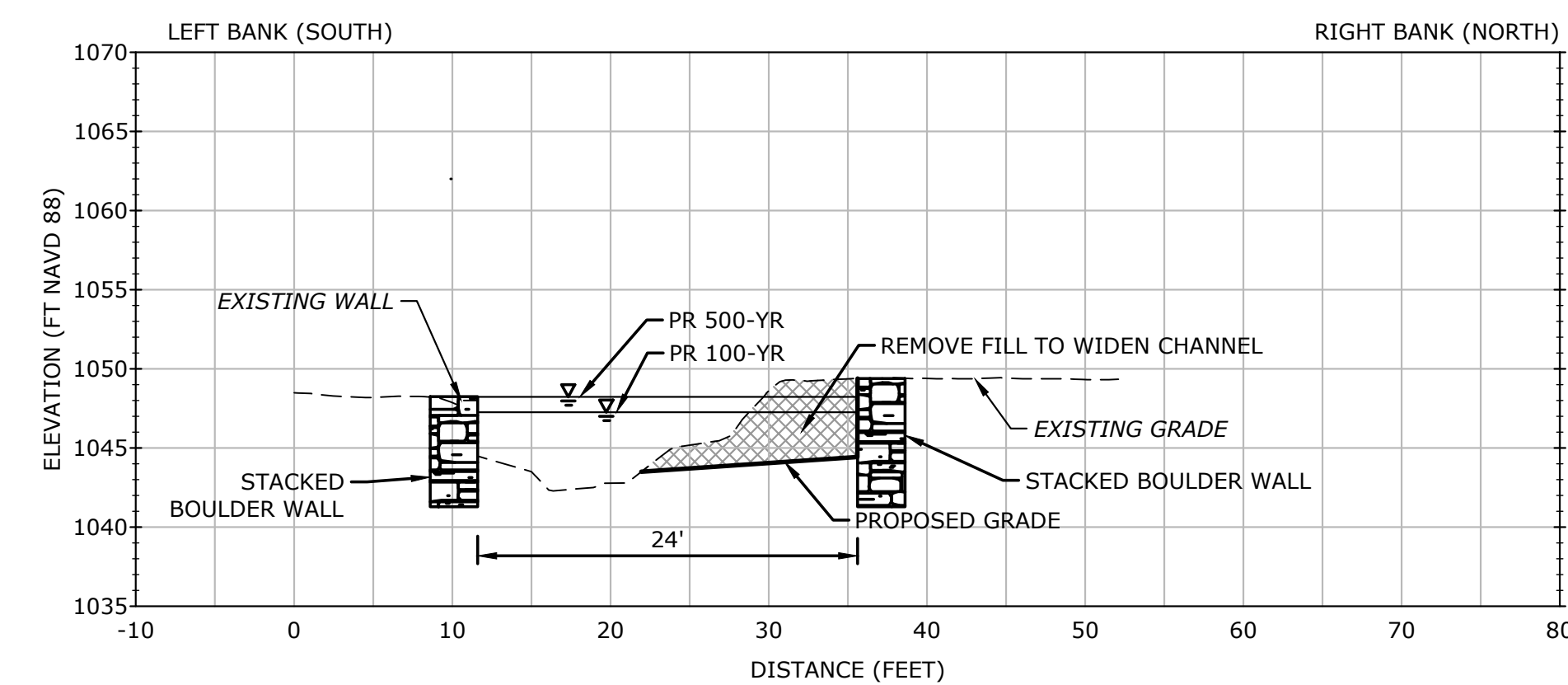
EXISTING MAIN STREET CULVERTS AT ROAD CENTERLINE
 SCALE: H: 1"=10', V: 1"=10'



PROPOSED MAIN STREET BRIDGE AT ROAD CENTERLINE
 SCALE: H: 1"=10', V: 1"=10'



EXISTING DOWNSTREAM CROSS-SECTION
 SCALE: H: 1"=10', V: 1"=10'



PROPOSED DOWNSTREAM CROSS-SECTION
 SCALE: H: 1"=10', V: 1"=10'

SECTION NOTES:

1. ALL SECTIONS VIEWED LOOKING DOWNSTREAM.
2. DO NOT ATTEMPT TO MATCH PROPOSED GRADING IN AREAS WHERE BEDROCK IS ENCOUNTERED. EXCAVATE OVERLYING SEDIMENT AND RETURN TO GRADING PLAN AS SOON AS PRACTICABLE.

DESCRIPTION	DATE	BY

TYPICAL SECTIONS
 SOUTHERN TRIBUTARY FLOOD MITIGATION
 CABOT FLOOD STUDY
 MAIN STREET
 CABOT, VERMONT
 CONCEPT DESIGN

DESIGNED	DJO	RKS
DRAWN	DJO	CHECKED
1" = 10'		
FEBRUARY 25, 2025		
DATE		
15729.00002		
PROJECT NO.		
4 OF 6		
SHEET NO.		

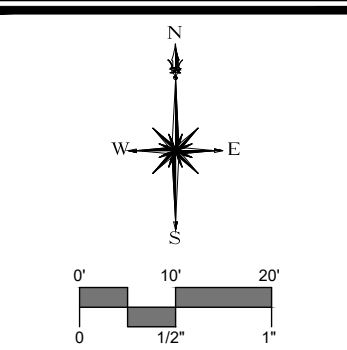
XS-1
 SHEET NAME

PHOTOCOPYED FROM ORIGINAL DRAWING. ALL RIGHTS RESERVED. NO PART OF THIS DOCUMENT IS TO BE REPRODUCED OR TRANSMITTED IN ANY FORM OR BY ANY MEANS, ELECTRONIC OR MECHANICAL, INCLUDING PHOTOCOPYING, RECORDING, OR BY ANY INFORMATION STORAGE AND RETRIEVAL SYSTEM.



LEGEND

- EDGE OF WATER
- EXISTING MAJOR CONTOUR
- EXISTING MINOR CONTOUR
- APPROX. PROPERTY LINE
- STORM DRAIN
- SANITARY SEWER
- WATER MAIN
- CATCH BASIN
- SEWER MANHOLE
- UTILITY POLE



SLR

SOUTH MAIN STREET
 FLORENCE, VT 05075
 802.882.8335
 SLRCONSULTING.COM

DESCRIPTION	DATE	BY

- MAPPING NOTES**
1. SURVEY COLLECTED BY GRENIER ENGINEERING, P.C. OF WATERBURY, VERMONT IN SEPTEMBER 2024.
 2. ADDITIONAL FIELD DATA COLLECTED BY SLR CONSULTING IN JULY AND AUGUST 2024.
 3. UTILITY INFORMATION BASED ON THE SEWER SYSTEM PLANS DEVELOPED BY PHELPS ENGINEERING, 2000.
 4. TOPOGRAPHIC CONTOURS ACQUIRED FROM VERMONT CENTER FOR GEOGRAPHICAL INFORMATION (VCGI). VCGI LIDAR ELEVATION SURFACES WERE GENERATED FROM A HIGH-RESOLUTION DATASET COVERING EASTERN VERMONT COLLECTED IN 2014 (0.7M RESOLUTION).
 5. DRAWING REFERENCES THE NORTH AMERICAN DATUM OF 1983 (NAD 83) STATE PLANE OF VERMONT IN UNITS OF FEET. ELEVATIONS REFERENCE THE NORTH AMERICAN VERTICAL DATUM OF 1983 IN UNITS OF FEET.
 6. BASE MAP INFORMATION SUPPLEMENTED USING AVAILABLE GIS SHAPEFILES, FIELD MEASUREMENTS, AND DIGITIZING SITE FEATURES USING AERIAL PHOTOGRAPHY.
 7. PROPERTY LINE INFORMATION OBTAINED FROM AVAILABLE 2024 GIS DATA FROM VCGI AND SHOWN AS APPROXIMATE.

EXISTING CONDITIONS - VAST BRIDGE ABUTMENTS

SOUTHERN TRIBUTARY FLOOD MITIGATION
 CABOT FLOOD STUDY

MAIN STREET
 CABOT, VERMONT

CONCEPT DESIGN

DJO	DJO	RKS
DESIGNED	DRAWN	CHECKED
SCALE: 1" = 20'		
DATE: FEBRUARY 25, 2025		
PROJECT NO.: 15729.00002		
SHEET NO.: 5 OF 6		
EX-2		

